

Montgomery County Topographic Map

The Maryland National Capital Park and Planning Commission;

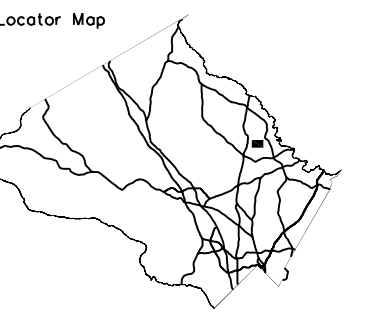


Montgomery County Department of Park and Planning

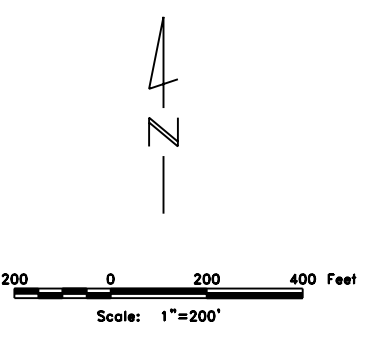
DIGITAL MAP COMPILED BY:
Analytical Surveys, Inc.
Colorado Springs, Colorado
Under Contract to Maryland National
Capital Park and Planning Commission,
Montgomery County Department of Park
and Planning.
G.P.S. Control Provided by Analytical
Surveys, Inc.
Stereo Aerial Photography Provided
by Analytical Surveys, Inc., Colorado
Springs, Colorado to Montgomery County
Department of Information Systems &
Telecommunications.

NOTES:
This map has been prepared using
1:14400 scale aerial photography from
which topography was compiled using
stereo photogrammetric methods. The
aerial photography was flown on
April 7, 1994; the contour interval is
5'-0". Use of this map, other than for
general planning purposes, is not
recommended. Please report any errors
or omissions to the Research & Technology
Center of the Maryland National Capital
Park and Planning Commission, Montgomery
County Department of Park and Planning,
(301) 495-4700.

Copyright 1996. All rights reserved.
This map is protected by copyright. It may
not be copied, reproduced or duplicated
in any form including electronic means
such as: digitizing, scanning, and image
processing, or by any other system now
known or to be invented, without prior
written permission from the Maryland National
Capital Park and Planning Commission,
Montgomery County Department of Park and
Planning, (301) 495-4700.

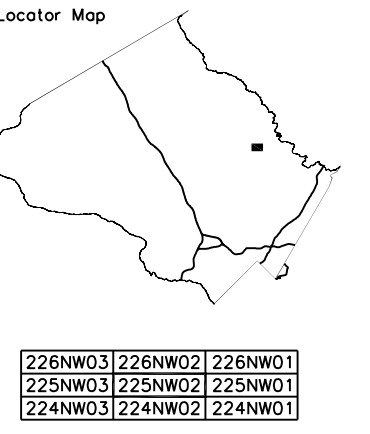


227NW03 | 227NW02 | 227NW01
226NW03 | 226NW02 | 226NW01
225NW03 | 225NW02 | 225NW01

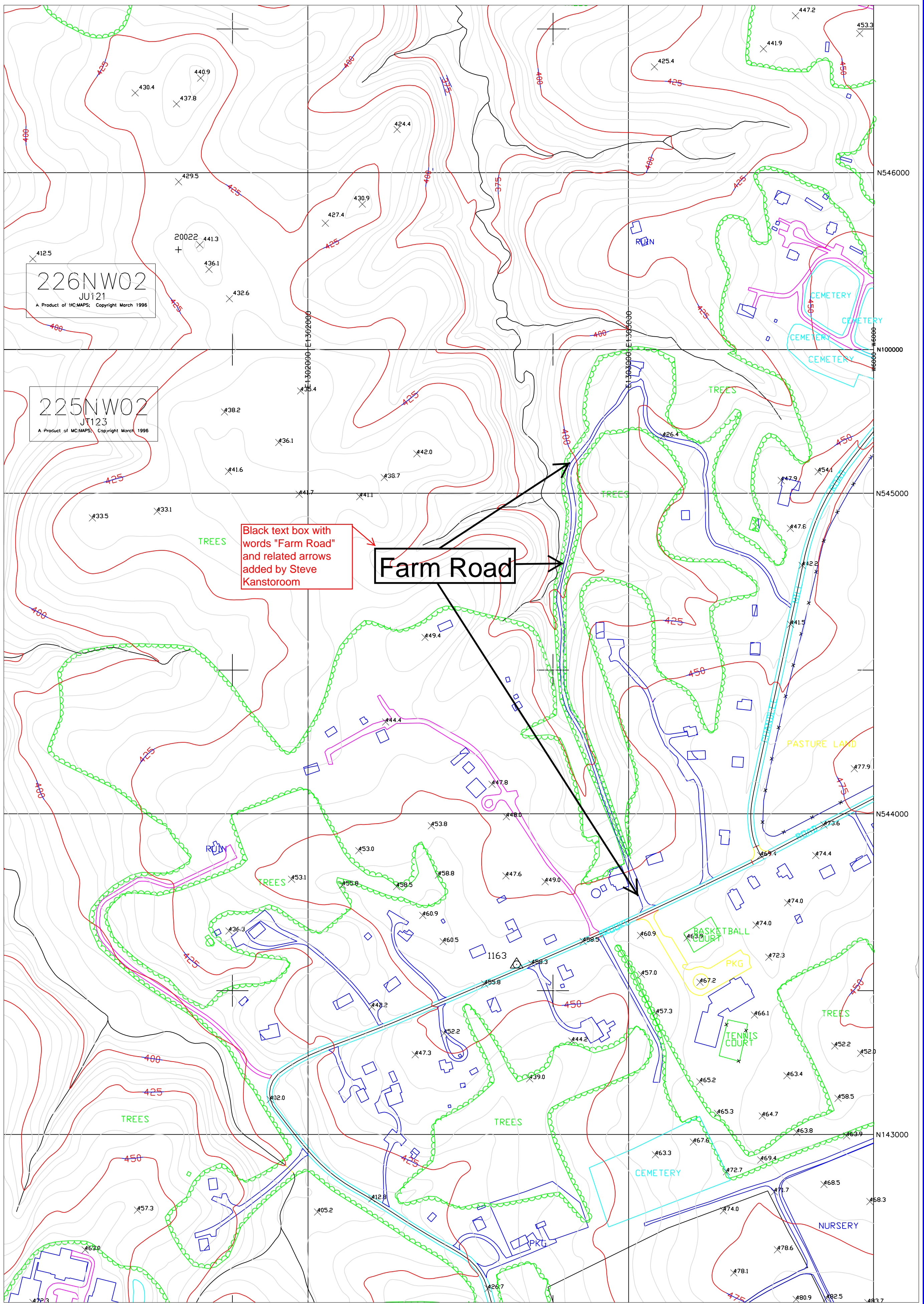


NOTES:
This map has been prepared using
1:14400 scale aerial photography from
which topography was compiled using
stereo photogrammetric methods. The
aerial photography was flown on
March 7, 2000; the contour interval is
5'-0". Use of this map, other than for
general planning purposes, is not
recommended. Please report any errors
or omissions to the Research & Technology
Center of the Maryland National Capital
Park and Planning Commission,
Montgomery County Park and Planning
Department, (301) 495-4700.

Copyright 1996. All rights reserved.
This map is protected by copyright. It may
not be copied, reproduced or duplicated
in any form including electronic means
such as: digitizing, scanning, and image
processing, or by any other system now
known or to be invented, without prior
written permission from the Maryland National
Capital Park and Planning Commission,
Montgomery County Park and Planning
Department, (301) 495-4700.



226NW03 | 226NW02 | 226NW01
225NW03 | 225NW02 | 225NW01
224NW03 | 224NW02 | 224NW01



Black text box with
words "Farm Road"
and related arrows
added by Steve
Kanstorom

Farm Road